

# IPCO PREFORMED FLASHING END DAM IN SELF-ADHESIVE RUBBERIZED ASPHALT

## 1. Product Name

IPCO Preformed Flashing End Dam in self-adhesive rubberized asphalt

## 2. Manufacturer

Illinois Products Corporation (IPCO)  
423 Joseph Drive  
South Elgin, IL 60177-2268  
800-383-8183; 847-289-2800  
847-289-2804 (fax)  
www.illinoisproducts.com

## 3. Product Description

The IPCO Preformed Flashing End Dam in self-adhesive rubberized asphalt provides maximum protection against moisture infiltration above and below wall openings. The flashing membrane overlaps the preformed corner, forming a continuous moisture barrier.

The preformed technology of the IPCO Preformed Flashing End Dam eliminates the series of cuts, folds, flaps and patching required to field fabricate an inside or outside corner. This time-consuming and difficult procedure often results in a less than desirable corner condition. Using IPCO Preformed Flashing End Dams will also save valuable and expensive field labor hours.

For additional complete protection, IPCO Preformed Flashing Inside and Outside Corners are recommended for protection at corner conditions. See the IPCO Preformed Flashing Inside and Outside Corner data sheet for more information.

IPCO Preformed Flashing End Dams are also available in stainless steel and copper for superior protection at corner and end-flashing conditions. Copper end dams are especially useful when using copper laminate flashing material. See the IPCO Preformed Corner and End Dam in stainless steel and copper data sheet for more information.

## 4. Technical Data

- Dimensions: 3"x3"x3" and 6"x6"x6" standard, 90°, special dimensions available upon request
- Total Thickness: 30 & 40mil
- Thickness of Rubberized Asphalt: 26 & 36mil
- Thickness of Polyethylene Film: 4mil
- For ASTM information and material specifications, please refer to IPCO Self-Adhesive Rubberized Asphalt Flashing data sheet

## 5. Installation

The substrate surface should be cleaned of dust, dirt and foreign matter. All sharp protrusions should be eliminated and surfaces should be dry.

IPCO Flashing Primer is recommended to be applied on building surfaces before applying the flashing membrane, especially if temperatures are below 40°F. Apply the primer at a rate of 250-400 square feet per

gallon by brush or roller. Do not thin. Primer is to remain tacky. Flashing can be placed 30 to 60 minutes after primer is applied. In temperatures below 40°F, any surface receiving flashing (including flashing overlaps) should first be primed with IPCO Flashing Primer.

Drip edge is to be installed first by laying drip edge in a bead of caulk, then all preformed corners and end dams, then the roll flashing. Recess the flashing 1" from the vertical face of the masonry wall.

Overlaps of flashing should be a minimum of 4". Where flashing sections overlap, the seam created by the overlap should be sealed with IPCO Mastic. IPCO Mastic should never be used on the adhesive side of the IPCO Flashing, within 1" of the face of the masonry wall, or as an adhesive under drip edge.

If the flashing material is terminated in a vertical condition, the IPCO Termination Bar should be used and caulked as directed. If the flashing is installed laid-back into a CMU backup wall, the termination bar is not necessary.

After installation of the material, the flashing should be inspected and all protrusions or open seams should be patched with a clean piece of the IPCO Flashing and IPCO Mastic. IPCO Mastic is used on the top of the flashing for sealing purposes and should never touch the adhesive side of the material.

IPCO Flashing is recommended for concealed applications only, and should be covered within 30 days to prevent prolonged exposure to sunlight. If rubberized asphalt or mastic is installed near or outside the exterior face of the masonry wall, sunlight and heat from the sun may cause softening and oozing resulting in staining or dripping. Additionally, flashing should not be installed in temperatures below 25°F.

Do not use silicone or polysulfide sealants in contact with IPCO Flashing, and do not allow IPCO Flashing to come in to contact with any dissimilar composite material such as EPDM or PVC flashing.

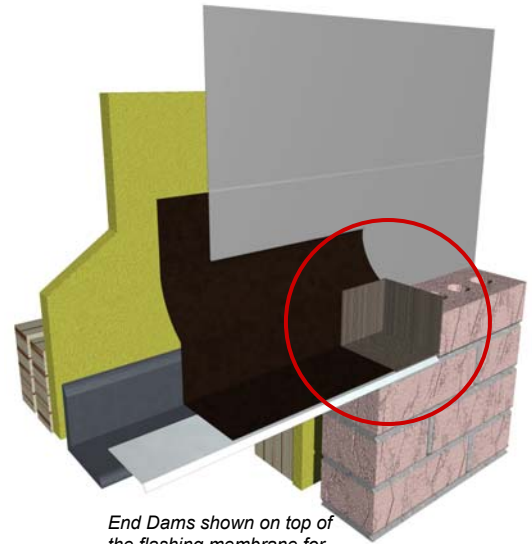
Refer to each specific data sheet for each product being provided for additional information and technical data, as well as the IPCO Flashing System Installation Guide included in the IPCO product catalog.

## 6. Availability and Cost

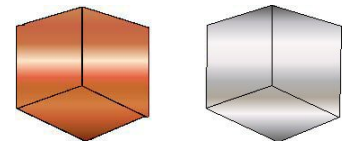
All Illinois Products Corporation products and prices are available through a nationwide network of masonry and building supply distributors.

## 7. Warranty

The recommendations and properties attributed to the products are based upon what is believed to be reliable information. Illinois Products Corporation warrants materials to be of good quality and will replace unused material proven to be defective. No expressed or implied warranty of installed material is made because satisfactory results depend not only on product quality but also upon factors



*End Dams shown on top of the flashing membrane for clarity. End Dams are placed first and flashing membrane overlaps.*



End Dams also available in Copper and Stainless Steel

that are beyond IPCO's control.

## 8. Maintenance

No maintenance is required after proper installation.

## 9. Technical Services

Contact the manufacturer for any required technical services. Details and suggested application drawings are available on each individual product data sheet. IPCO Material Safety Data Sheets should be read and understood by all personnel before using the products.

## 10. Filing Systems

Product information is available from the manufacturer in the following formats:

- Complete IPCO product line catalog in printed and CD formats
- Online access to all data sheets at: [www.illinoisproducts.com](http://www.illinoisproducts.com)



ILLINOIS PRODUCTS CORPORATION  
423 Joseph Drive  
South Elgin, IL 60177

[www.illinoisproducts.com](http://www.illinoisproducts.com)  
Phone: 800-383-8183  
Fax: 847-289-2804