

IPCO STAINLESS STEEL TERMINATION BAR

1. Product Name

IPCO Stainless Steel Termination Bar

2. Manufacturer

Illinois Products Corporation (IPCO)
423 Joseph Drive
South Elgin, IL 60177-2268
800-383-8183; 847-289-2800
847-289-2804 (fax)
www.illinoisproducts.com

3. Product Description

The IPCO Stainless Steel Termination Bar is an important piece of the IPCO Flashing System and is to be used when the flashing is terminated in a vertical position in the cavity wall. The IPCO Stainless Steel Termination Bar not only provides additional support for the flashing material, but also provides an effective and easy-to-use caulk edge for the top seam of the flashing installation.

The IPCO Stainless Steel Termination Bar is compatible with any backup wall composition. It is provided with 1/4" pre-punched screw holes located every 8" along the length of each piece. The holes allow for easy installation of concrete screws or other mechanical fasteners which will hold the flashing securely to the backup wall. The added advantage of the pre-punched holes takes the guess work out of the installation of the termination bar, eliminating the need for self-tapping fasteners, and maintaining even and equal pressure along the entire length of the termination bar.

The IPCO Stainless Steel Termination Bar's unique double lipped design allows the installer to place either edge along the top terminating portion of flashing, ready to accept sealant into the trough created and thus ensuring that any water running down the backup wall will not be allowed to penetrate behind the vertically terminating flashing.

The IPCO Stainless Steel Termination Bar is provided in 8' sections. For those areas which require less than an 8' length, each bar can be easily cut to size to accommodate any specific application.

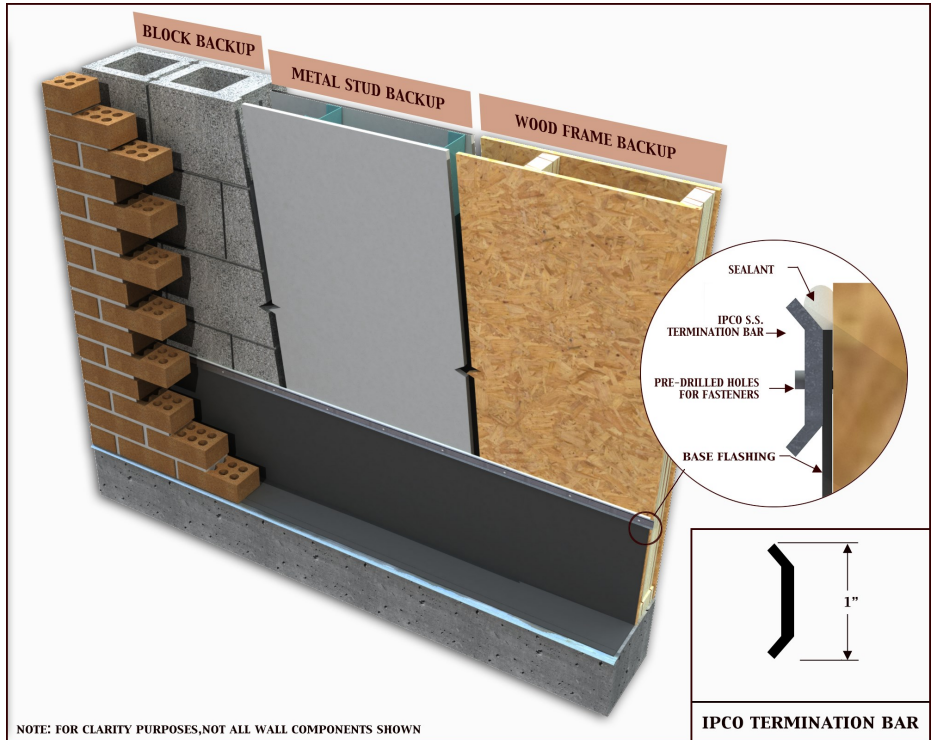
4. Technical Data

- Dimension: 20 gauge thick by 1" wide by 8' long
- Material: 304 grade stainless steel
- Pre-punched Holes: 1/4" holes spaced 8" o.c.

5. Installation

The substrate surface should be cleaned of dust, dirt and foreign matter. All sharp protrusions should be eliminated and surfaces should be dry. All data sheets and installation guides for the entire IPCO Flashing System should be read and understood by all personnel prior to installation of the IPCO Stainless Steel Termination Bar.

When the flashing material is terminated in a vertical condition, the IPCO Termination Bar should be used and caulked at the top edge.



Install the termination bar with concrete screws or other mechanical fastening devices. Place the bent portion of the termination bar just above the top edge of the flashing being secured (see detail inset above).

Do not use silicone or polysulfide sealants in contact with IPCO Rubberized Asphalt Flashing material.

For additional information on the installation of the IPCO Flashing System, refer to the IPCO Flashing System data sheet as well as the data sheets for each of the components of the IPCO Flashing System.

6. Availability and Cost

All Illinois Products Corporation products and prices are available through a nationwide network of masonry and building supply distributors.

7. Warranty

The recommendations and properties attributed to the products are based upon what is believed to be reliable information. Illinois Products Corporation warrants materials to be of good quality and will replace unused material proven to be defective. No expressed or implied warranty of installed material is made because satisfactory results depend not only on product quality but also upon factors that are beyond IPCO's control

8. Maintenance

No maintenance is required after proper installation.

9. Technical Services

Contact the manufacturer for any required

technical services. Details and suggested application drawings are available on each individual product data sheet. IPCO Material Safety Data Sheets should be read and understood by all personnel before using the products.

10. Filing Systems

Product information is available from the manufacturer in the following formats:

- Complete IPCO product line catalog in printed and CD format.
- Online access to all data sheets at: www.illinoisproducts.com



ILLINOIS PRODUCTS CORPORATION
423 Joseph Drive
South Elgin, IL 60177

www.illinoisproducts.com
Phone: 800-383-8183
Fax: 847-289-2804